



MMM
Excellence in
tube systems

Industry 4.0

Jordi Priu Pont

Manufactura Moderna de
Metales SA

January 2016



Some information about MMM

<https://www.youtube.com/watch?v=QuuSeiuJg6U>

MMM video

Who are we: Welcome



- ▶ We are experts in the metal tube transformation working with Steel and Stainless Steel
- ▶ Development Partner for our Customer collaborating from Design Concept Phases till entering into Production
- ▶ We are supplying to the major vehicle manufacturers in Europe
- ▶ Diversified portfolio
- ▶ Our know-how and technological expertise to serve our customers has allowed us to become a strategic partner both in the area of production and technical development of their products

More than supplier, partners!



Products



Turbo tubes



Brake tubes



Oil tubes



Air tubes



EGR Tubes



Locations



MMM

Barcelona. Spain



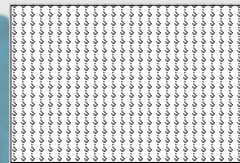
Corporate headquarters where the corporate services and the Development Center are located.

The main plant has an area of 4,400m² within a complex of 9,000 m². 137 employees.

Team in Nissan Synchro, 400 m². Headcount of 12 persons.

MMMA

Turda. Romania



High technology and high volume tube production plant with the capacity to manufacture engine and structural tube.

Area of 5,000 m². Operational since 2006. 250 employees.

Electrolytical Coating

Turda. Romania



Surface treatment plant to supply the group and also to external customers.

Area of 4,000 m². Operational since 2013. 12 employees.

MAR

Togliatti. Russia



Production plant oriented to supply automotive companies established in Russia.

Initial production of engine and structural tubes.

Area of 500 m². Operational since 2014. 20 employees.

MMM Excellence in tube systems

MMM Excellence in tube systems

Main customers



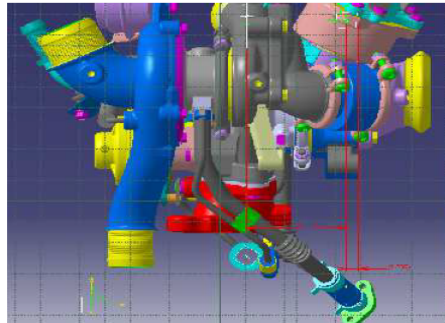
Design and Development Partner



Development Supplier

We can develop the product with our customer from **initial phases** to get the best solution taking into account the quality requirements of the product and the cost competitiveness using the following tools:

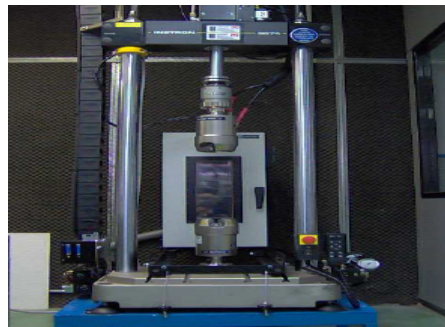
Design 2D/3D



Simulation



Testing/
Laboratory



Prototyping



4.0 industry solutions applied to MMM



robotics



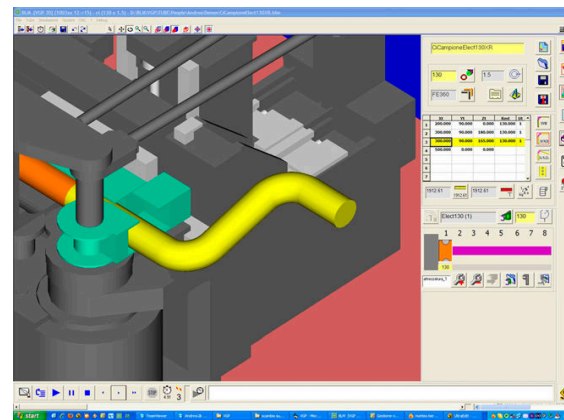
PLCs



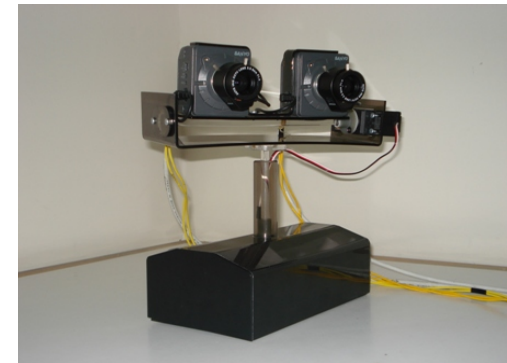
automations



sensors

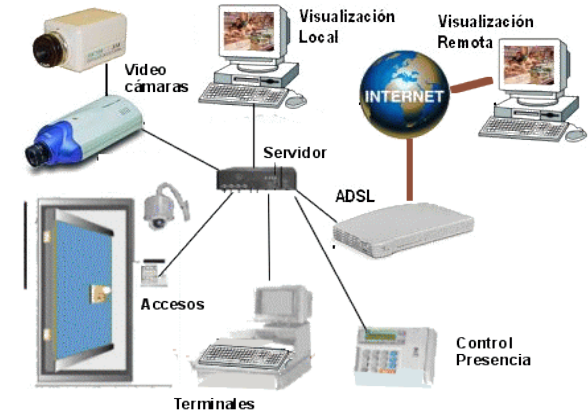


process simulation



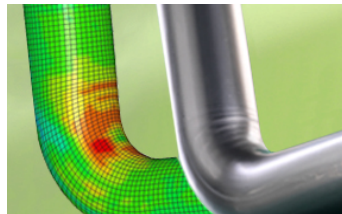
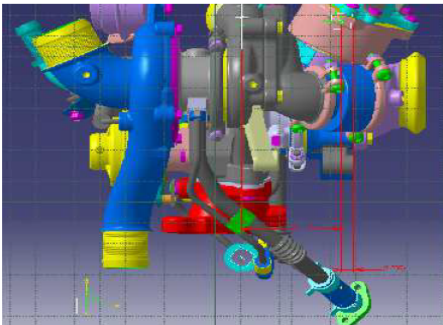
artificial vision

4.0 industry solutions applied to MMM

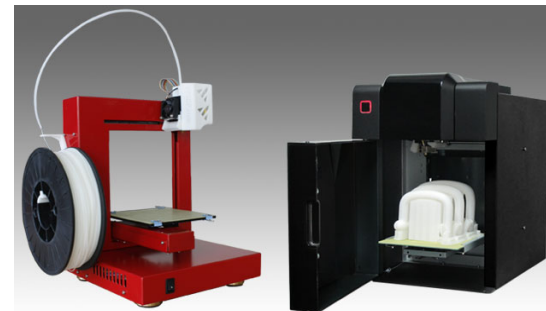


Video surveillance

RF

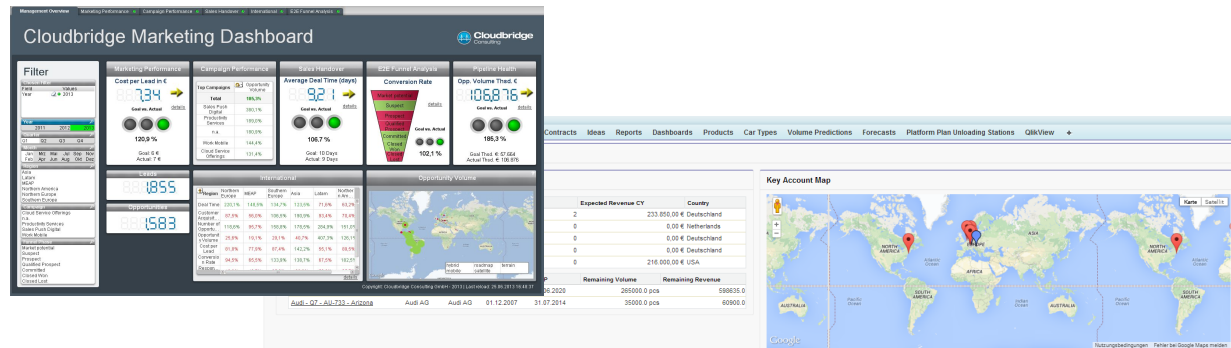
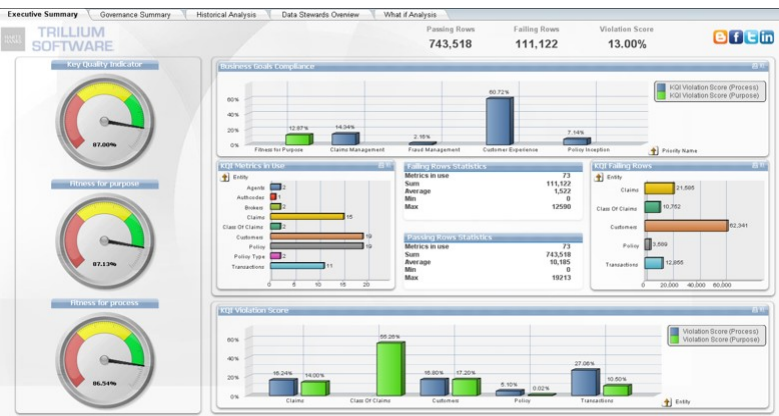
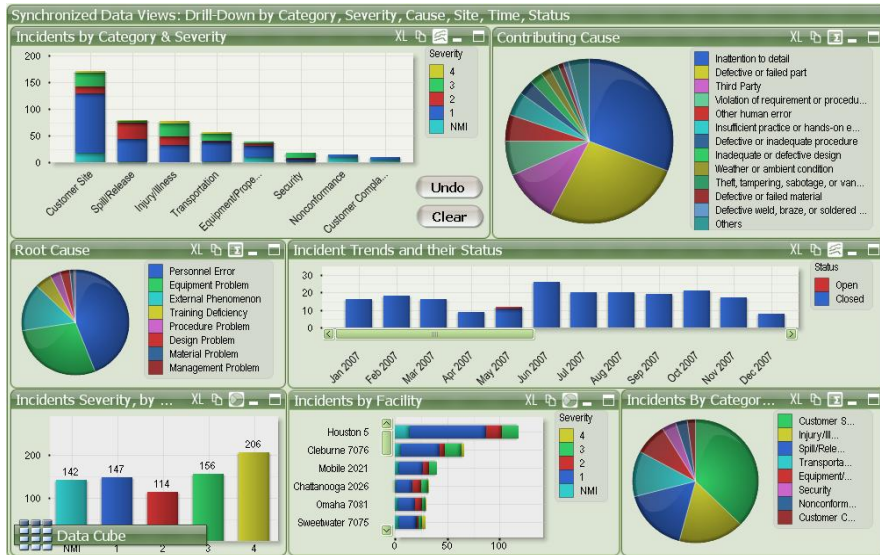


Computational analysis



3D Printing

New ERP: KPIs real time monitoring

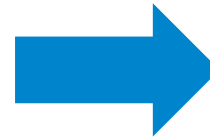


MMM Excellence in tube systems

Which are the results of all these solutions?



- increase productivity
- increase efficiency
- reduce production downtime
- reduce scrap and non-quality costs
- Processes optimization
- planning
- Real-time KPI monitoring
- Predictive Maintenance
- get traceability



As a investor:



Consulting company specialist on strategy and new technologies for companies. Digital Partner accompanying the whole process of digitalization including the implementation.



thethings.io is the internet of Things platform that enables fast and scalable connection of things to the internet, allowing you to monitor and manage your devices in real time and get flexible analytic reports. It is like Amazon Web Services but specialized in the **Internet of Things**.



Thank you for your attention!

Twitter: @jordipriu
jpriu@mmm.com